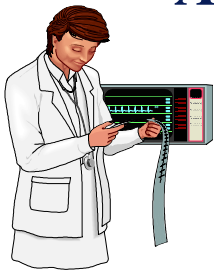
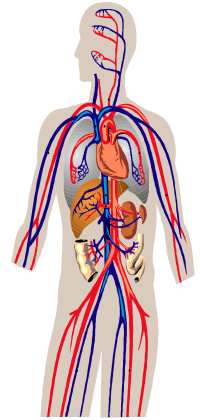


*A Munson Staff Development Presentation
Via the REMEC TeleHealth Network*



Critical Care Course
Spring 2007



Dates/Topics:

February 22, 2007	The Neurological System (8:00am-2:30pm)
March 1, 2007	The Pulmonary System (8am-3:15pm)
March 8, 2007	12 Lead EKG, Cardiac Assessment, Pressure Monitoring (8am-1:15am)
March 15, 2007	Antihypertensives, Vasoactives, CHF (8am-12:00pm)
March 20, 2007	12 Lead EKG, Shock, Pacemakers, Fluids & Electrolytes, Interventional Cardiology (8am-3:45 pm)
March 29, 2007	12 Lead EKG, Antiarrhythmias, Hemodynamics (8am-2:45pm)
April 12, 2007	GI Assessment, Management & Nutritional Support, Pain Management, Ethical Decisions & the Critically Ill Patient (8am-2:30 pm)
April 19, 2007	Post-Anesthesia Nursing, Renal Assessment & Failure (8am-11:45am)

Prerequisite: Healthcare professional w/basic anatomy & physiology background.

Learner Objectives: Provide the health care professional with information and skills needed to care for critically ill patients. Assessment and management of patients w/ various critical diagnoses will be covered by system.

Fee: Munson Health Care & Affiliates: No Fee
REMEC Members: \$20.00/day/per registrant
Outside Registrants: \$560.00 Full Course or \$80.00/day per registrant

MNA Accredited For more information contact MMC-Staff Development at 231-935-6532.

**Due to the interactive nature of this course,
class size is limited to 3 receiving sites.**

Site Location: _____
Site Contact & Phone #: _____